

# Get wild about Devon at Higher Wiscombe

Southleigh Devon EX24 6JF

t 01404 871360

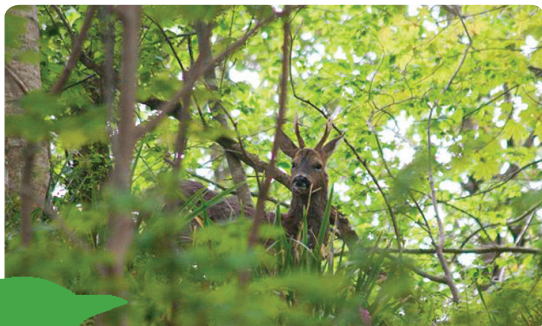
e [alistair@higherwiscombe.com](mailto:alistair@higherwiscombe.com)



Higher Wiscombe is at the head of Southleigh Valley in the heart of the East Devon Area of Outstanding Natural Beauty.



Set in 52 acres with a diversity of habitats including broadleaved woodland, willow and birch carr (wet woodland), orchard, grazed pasture, as well as a pond and a stream running through the site. The woodland carr has been designated a County Wildlife Site and the 500 year oak tree on the edge of this area is a veteran tree and listed as a 'Great Tree of East Devon'.



## Get wild about Devon

is a wildlife appreciation scheme for tourism businesses in Devon who are serious about proactively improving wildlife as part of their business. The scheme is supported by Devon County Council on behalf of Visit Devon.

[www.visitdevon.co.uk](http://www.visitdevon.co.uk)



The great oak is a splendid specimen, look at the epiphytes, moss and lichens growing on its bowing branches.

Willow and birch carr - the trees branches are dripping with lichen. Look for long tail tits and coal tits in the trees.

Woodcock and snipe can be seen in the damp woodland areas by the stream.

Hedgerow flowers include red campion, herb robert, navelwort, hartstongue fern and foxglove. Look for speckled wood, red admiral and tortoiseshell butterflies.

Look for stonechat and yellow hammer on the gorse scrub and whitethroat and dunnock in the hedgerows.

Watch pipistrelle, greater and lesser horseshoe bats flying around the buildings and along the hedgerows and over the grazing pasture in the evening.

Look out for greater spotted woodpecker, green woodpecker, treecreeper and nuthatch in the woodland.

Flocks of redwing and fieldfare can be seen feeding in the fields in winter as well as lapwing. Skylarks and meadow pipits can be heard through the summer.

Common blue, blue tailed and small red damselflies as well as emperor and golden ringed dragonfly can be seen around the pond and stream.

Roe deer can be seen grazing in the woods and fields and look out for a fox trotting along the hedgerow.

There are badger setts in the Marl pit along with an extensive rabbit warren. Bluebells and primroses can be seen in the orchard along with early purple orchids.

Buzzards soar on the thermals or look for one perched in the trees. Look out for the characteristic 'flap, flap, glide' of the sparrowhawk or a hovering kestrel. Listen for tawny owl with their 'kewick, twoowh'

# Higher Wiscombe

# Species List at Higher Wiscombe

## Birds

The following species of birds have been spotted by the owners on the 52 acre estate:

|                           |                         |
|---------------------------|-------------------------|
| Cormorant                 | House Martin            |
| Grey Heron                | Pied Wagtail            |
| Canada Goose              | Grey Wagtail            |
| Mallard                   | Wren                    |
| Buzzard                   | Dunnock                 |
| Sparrowhawk               | Robin                   |
| Kestrel                   | Redstart                |
| Peregrine                 | Blackbird               |
| Pheasant                  | Mistle Thrush           |
| Red Legged Partridge      | Song Thrush             |
| Grey Partridge            | Fieldfare               |
| Moorhen                   | Redwing                 |
| Lapwing                   | Garden Warbler          |
| Snipe                     | Willow Warbler          |
| Woodcock                  | Goldcrest               |
| Black headed Gull         | Long Tailed Tit         |
| Common Gull               | Blue Tit                |
| Lesser Black backed Gull  | Great Tit               |
| Herring Gull              | Nuthatch                |
| Common Tern               | Treecreeper             |
| Wood pigeon               | Jay                     |
| Stock Dove                | Magpie                  |
| Nightjar                  | Jackdaw                 |
| Collared Dove             | Rook                    |
| Cuckoo                    | Carrion Crow            |
| Barn Owl                  | Raven                   |
| Little Owl                | Starling                |
| Tawny Owl                 | House Sparrow           |
| Swift                     | Chaffinch               |
| Green Woodpecker          | Greenfinch              |
| Great Spotted Woodpecker  | Goldfinch               |
| Lesser Spotted Woodpecker | Linnet                  |
| Skylark                   | Bullfinch               |
| Swallow                   | Yellowhammer            |
| House Martin              | <b>Total 66 species</b> |

The following species of birds were spotted by an RSPB Farm-watch survey that took place during 2006:

Lesser Redpoll  
Meadow Pipit  
Spotted Flycatcher

## Mammals

Badger  
Fox  
Dormouse  
Rabbits  
Fallow Deer (*we are regularly visited by a light cream herd*)  
Roe Deer (*including a very pale almost Albino male*)

## Bats

**We have a DEFRA Bat Licence**

Lesser Horseshoe  
Greater Horseshoe  
Pipistrelle  
Long Eared  
Serotine

## Wildlife places of interest nearby

### Branscombe, Salcombe Regis and Sidmouth – National Trust

The national trust own the coastline in this area, there is plenty to see with shingle beaches, woodland and heath. Mining bees, fritillary butterflies and blue gromwell are specialities.

### Great Undercliffe NNR and Coastal Path – Natural England

OS Map SY 256 896 SY 323 913

Part of the Jurassic Coast World Heritage Site, the coastal path passes the largest self-sown ash woodland in Britain

### Core Hill Wood, Sidmouth – Woodland Trust

OS Map SY 113 911

A mixed woodland established in the last 100 years but with much older mature boundary trees.