

# Get wild about Devon

## at Buckland Tout Saints Hotel

Goveton, Kingsbridge, Devon TQ7 2DS

t 01548 853055

e [enquiries@bucklandtoutsaints.co.uk](mailto:enquiries@bucklandtoutsaints.co.uk)

w [www.bucklandtoutsaints.co.uk](http://www.bucklandtoutsaints.co.uk)



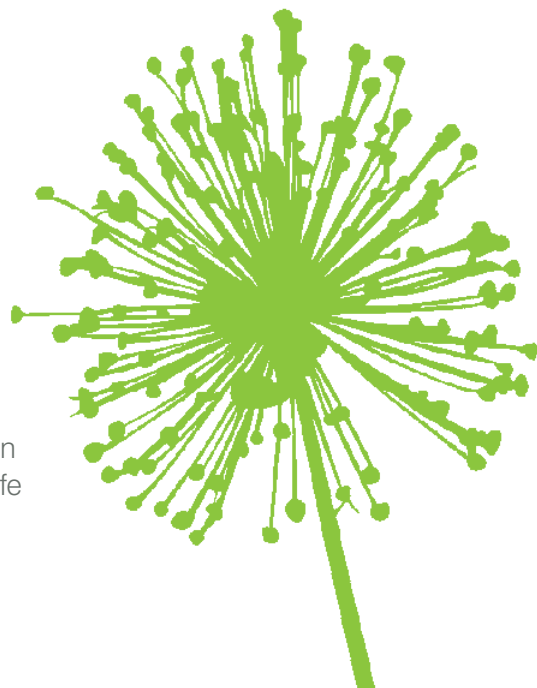
Buckland Tout-Saints hotel can be found in the heart of the South Devon countryside just outside Kingsbridge and not far from the popular sailing centre of Salcombe, the historic town of Dartmouth and the medieval town of Totnes.

This luxury country house Hotel is delightfully secluded amidst four and a half acres of beautifully tended gardens. There is also a woodland garden where there are many fine specimen trees and a plethora of flora and fauna.

## Get wild about Devon

is a wildlife appreciation scheme for tourism businesses in Devon who are serious about proactively improving wildlife as part of their business. The scheme is supported by Devon County Council on behalf of Visit Devon.

[www.visitdevon.co.uk](http://www.visitdevon.co.uk)



# Buckland Tout-Saints Hotel

[www.visitdevon.co.uk](http://www.visitdevon.co.uk)

Look out for greater spotted woodpecker, green woodpecker, treecreeper and nuthatch, blue, coal and long tail tit in the woodland.

The ground flora includes snowdrops, primroses, bluebells, celandines, pignut, ground elder and red campion.

Old Dovecote

Flocks of redwing and fieldfare can be seen feeding in the fields and woodland in the winter.

Large Oak and Beech trees

Buckland Tout-Saints Hotel

Formal Pond and Garden

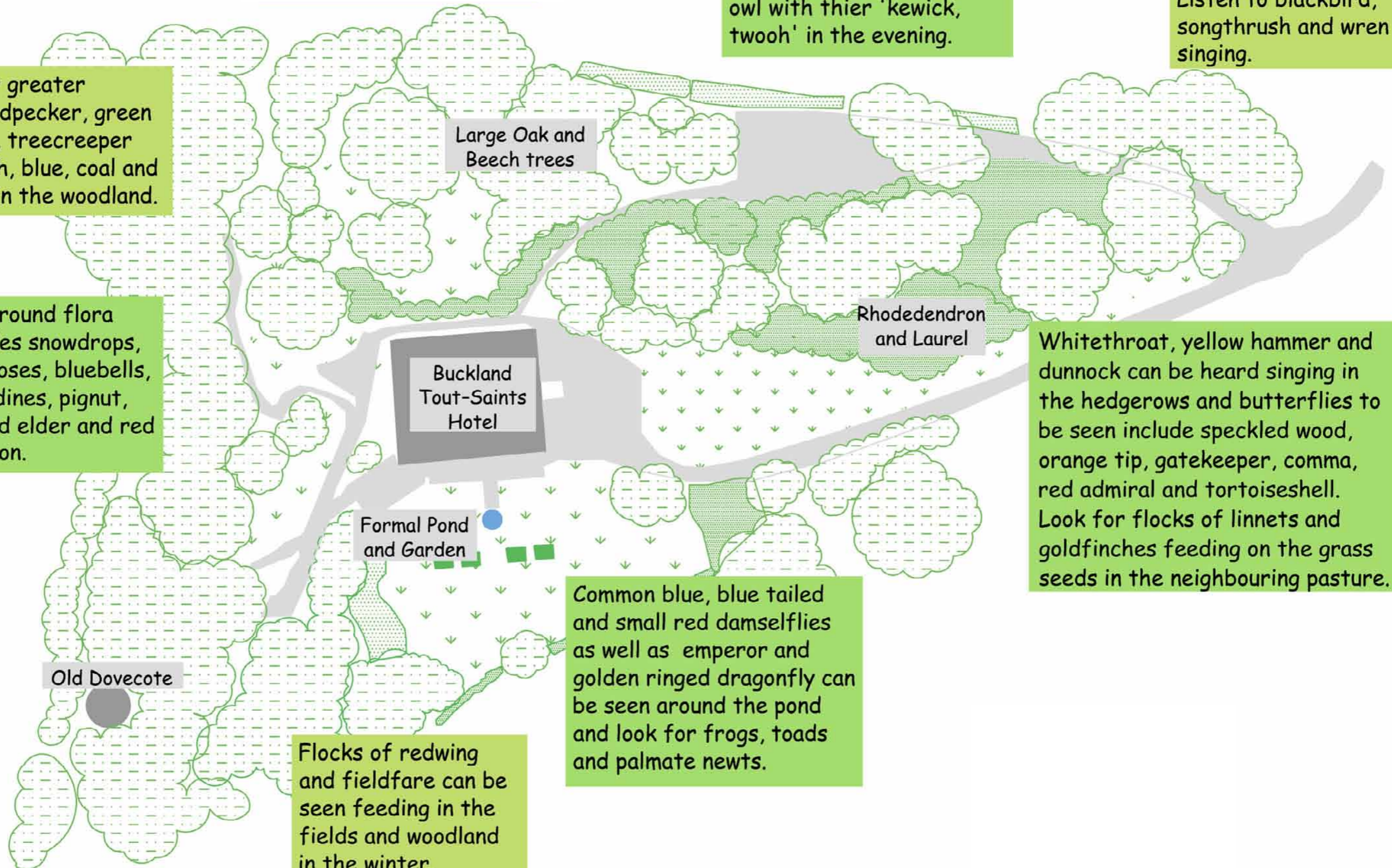
Common blue, blue tailed and small red damselflies as well as emperor and golden ringed dragonfly can be seen around the pond and look for frogs, toads and palmate newts.

Buzzards soar on the thermals or look for one perched in the trees. Look out for the characteristic 'flap, flap, glide' of the sparrowhawk or a hovering kestrel. Listen for tawny owl with thier 'kewick, twooh' in the evening.

Rhododendron and Laurel

Flitting amongst the trees, birds such as blue, great, coal and long tail tit along with blackcap and chiffchaff can be seen. Listen to blackbird, songthrush and wren singing.

Whitethroat, yellow hammer and dunnock can be heard singing in the hedgerows and butterflies to be seen include speckled wood, orange tip, gatekeeper, comma, red admiral and tortoiseshell. Look for flocks of linnets and goldfinches feeding on the grass seeds in the neighbouring pasture.



# Species List

## at Buckland Tout-Saints Hotel

### Trees & Shrubs

Ash  
Beech  
Black Alder  
Blackthorn  
Buddleia  
Elder  
Field Maple  
Hawthorn  
Hazel  
Holly  
Oak  
Rowan  
Scots pine  
Silver Birch  
Sweet chestnut  
Sequoia  
Wild cherry  
Willow

### Plants

Annual meadow grass  
Bluebell

Bramble  
Burdock  
Cleavers  
Cocksfoot  
Ground Ivy  
Giant hogweed  
Common dog violet  
Cow parsley  
Creeping buttercup  
Creeping Thistle  
Enchanters nightshade  
Honeysuckle  
Greater plantain  
Greater sedge  
Herb Robert  
Honeysuckle  
Herb Bennet  
Germander speedwell  
Ivy  
Lord and ladies  
Nettles

Primrose  
Red campion  
Snowdrop

Timothy  
Yorkshire fog

### Ferns

Hard fern  
Harts tongue fern  
Lady fern  
Male fern  
Scaly male fern

### Mammals

Badger  
Bank vole  
Common shrew  
Field mouse  
Hedgehog  
Mole  
Pipistrelle bat  
Rabbit  
Stoat  
Wood mouse

### Birds

Blackbird

Blackcap  
Blue tit  
Buzzard  
Carrion crow  
Chaffinch  
Chiffchaff  
Coal tit  
Duncock  
Fieldfare  
Goldfinch  
Great tit  
Greater spotted woodpecker  
Greenfinch  
House martin  
Heron  
House sparrow  
Jackdaw  
Jay  
Kestrel  
Linnets  
Long tail tit  
Mistle thrush  
Pied wagtail

Raven  
Redwing  
Robin  
Rook  
Skylark  
Song thrush  
Sparrowhawk  
Swallow  
Swift  
Tawny owl  
Whitethroat  
Wren

### Reptiles & Amphibians

Common lizard  
Frog  
Grass snake  
Palmate newt  
Slow worm  
Toad

*NB This is not a comprehensive list*

## Wildlife places of interest nearby

### Slapton Ley National Nature Reserve (NNR, SSSI) – OS Map: SX 827 443

The largest freshwater lake in the southwest, it is separated from the sea by the narrow shingle ridge known as Slapton sands. There is plenty to see, waterfowl include tufted duck, coot, golden eye, great crested grebe and mammals include badger, otter, dormouse and many species of bats. Slapton Bridge, which divides the two leys, is a great vantage point to watch the plethora of wildlife that the reserve supports. **For more information Tel: 01548 580685.**

### Beesands – OS Map: SX 819 410

The small village of Beesands sits behind a mile long stretch of shingle beach. There is a small freshwater lagoon 'Widdecombe Ley' which is an important wildlife site. There is a bird hide which is open to the public from which to watch the wildfowl and other wildlife that visits this ley. **For more information contact Torbay Coast and Countryside Trust Tel: 01803 882619.**

### Start Point – OS Map: SX 821 374

A perfect spot for watching the sun go down looking at the lighthouse and the stunning scenery. It is also a good place to watch the summer migrant birds such as willow warbler, chiffchaff and wheatear arriving. March and April is the best time for the migrants, however all year round interest includes peregrine, kestrel, raven and cirl bunting. Look out on to the rocks known as Pear Tree Point and you may see a seal or two. **For more information Tel: 01803 882619.**

### Hallsands – OS Map: SX 817 388

Above the ruined village of Hallsands, by the row of old fishing cottages is a kittiwake colony, watch these noisy birds fly to and from their nesting site and look out for fulmars in this area too.

### Prawle Point – OS Map: SX 741 373

Coastal headland south of the village of East Prawle, great views and one of the best bird migration points. Spring and autumn are the best time. Cirl bunting breed in the area.